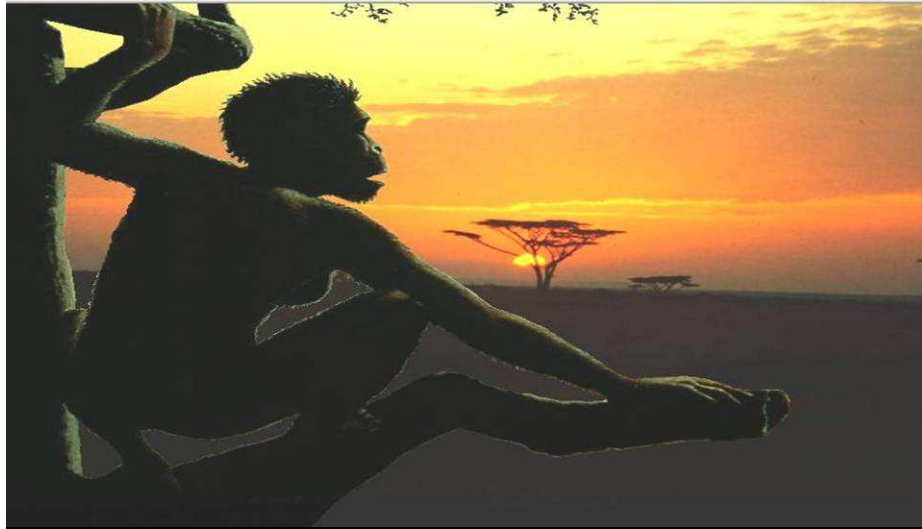
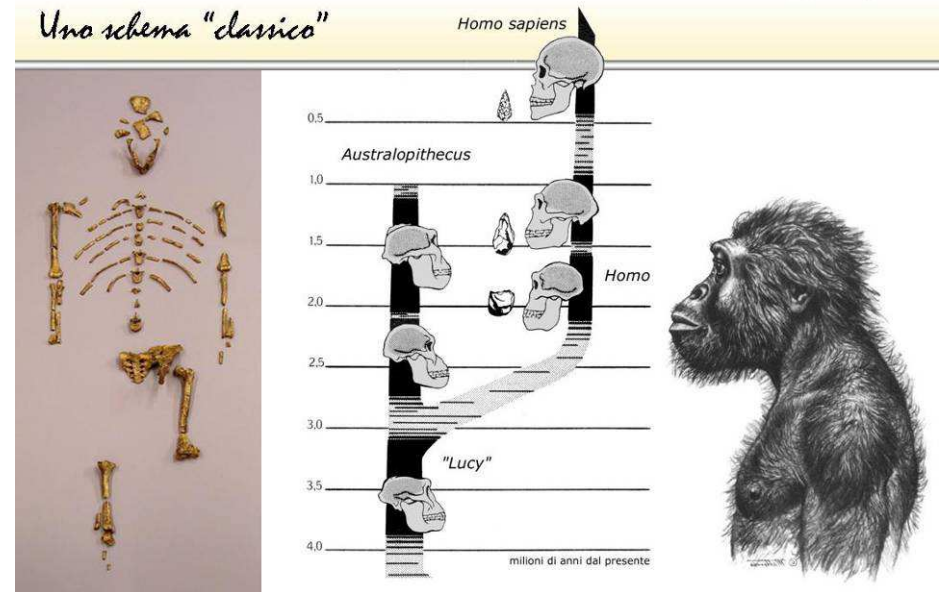


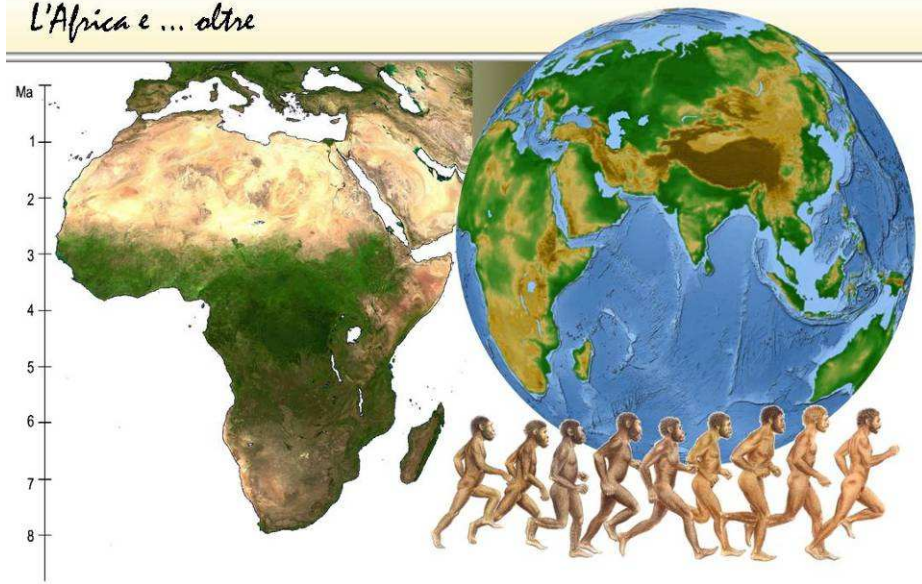
L'alba dell'uomo



Uno schema "classico"

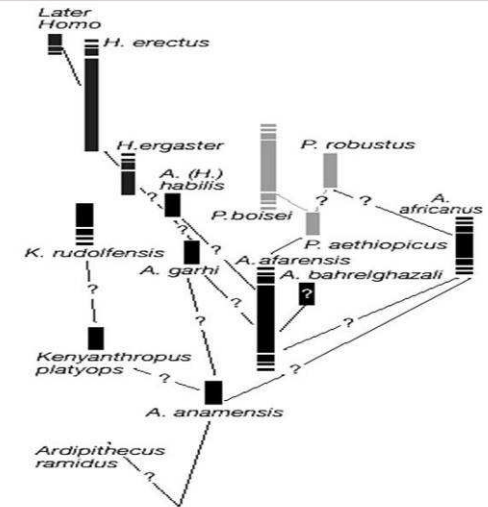


L'Africa e ... oltre

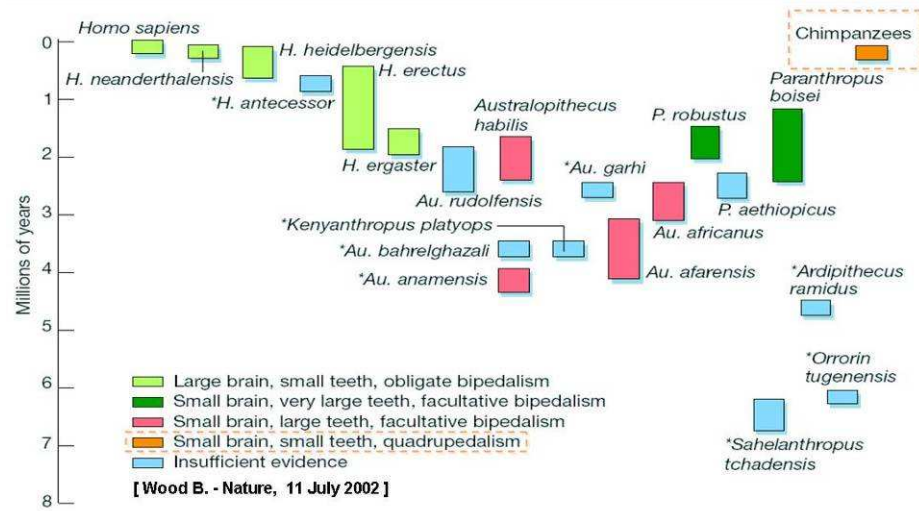


Ominidi: un elenco

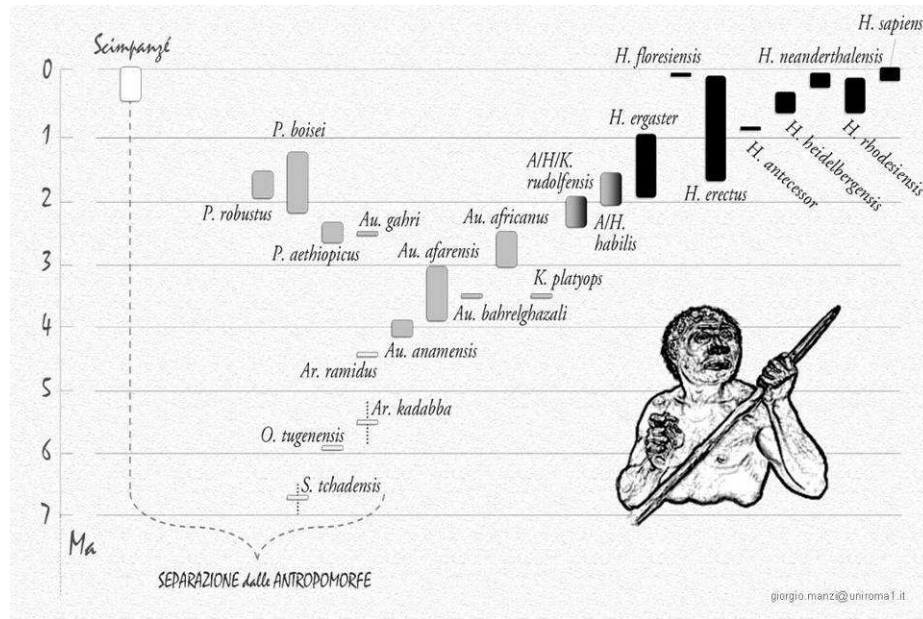
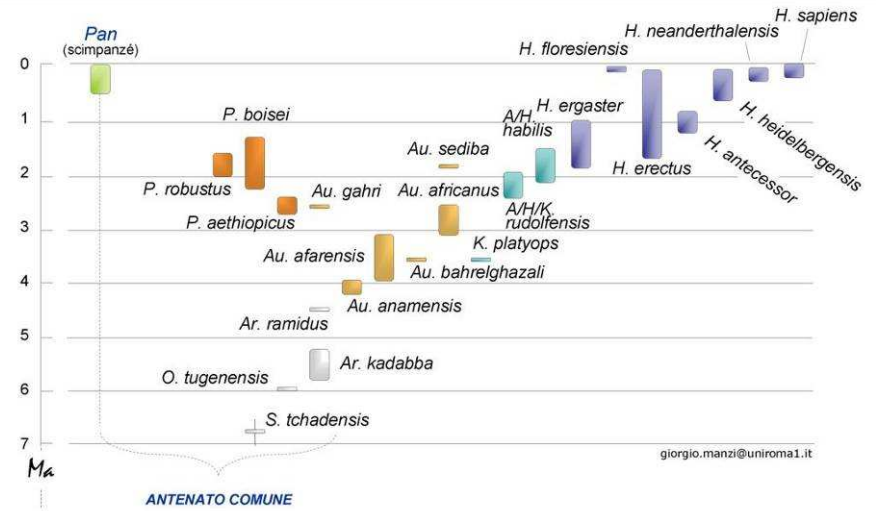
- ✓ Homo – da 3 a 7 specie o più
- ✓ Paranthropus – 3 specie
- ✓ Australopithecus – almeno 3-4 specie
- ✓ E poi anche:
 - Australopithecus garhi
 - Australopithecus bahrelghazali
 - Kenyanthropus platyops
 - Ardipithecus ramidus
 - Orrorin tugenensis
 - Sahelanthropus chadensis



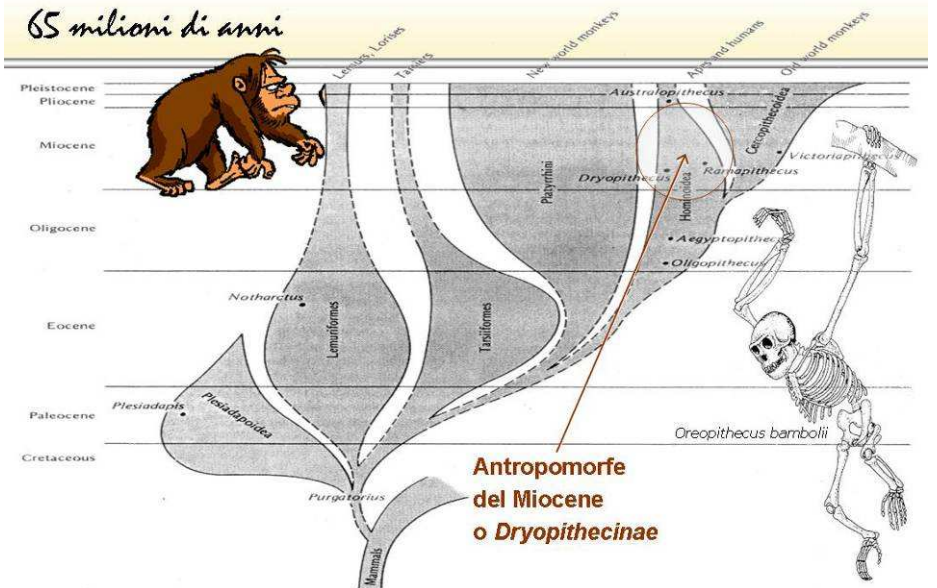
Ominidi: tempo and mode



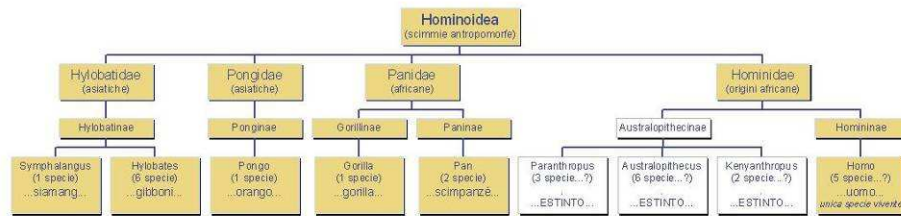
Ominidi



65 milioni di anni

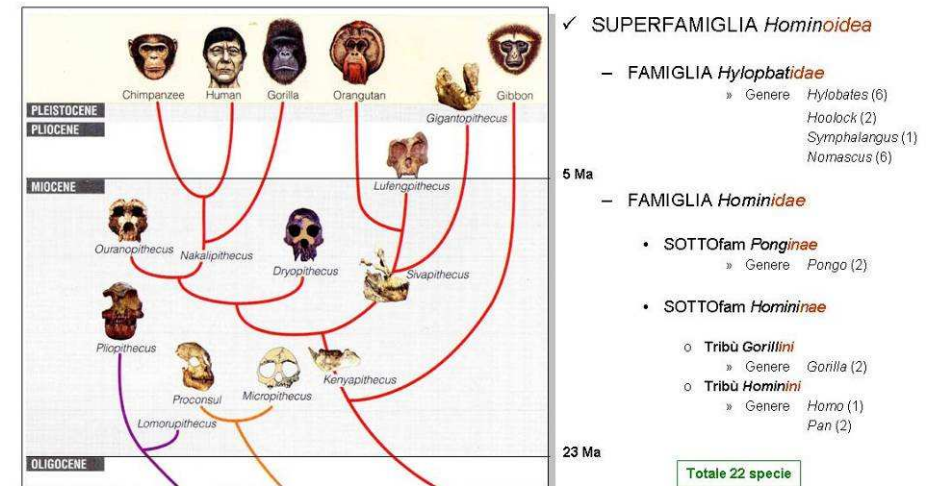


Antropomorfe, una "vecchia" classificazione

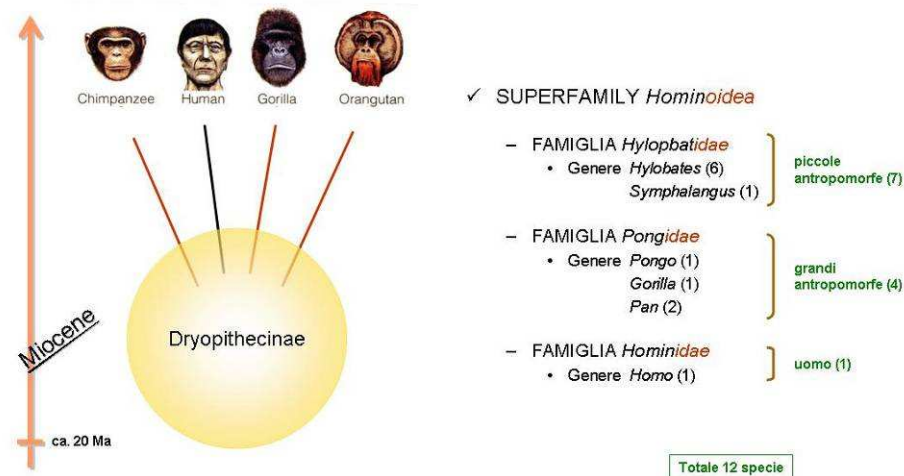


VOI SIETE QUI...!!

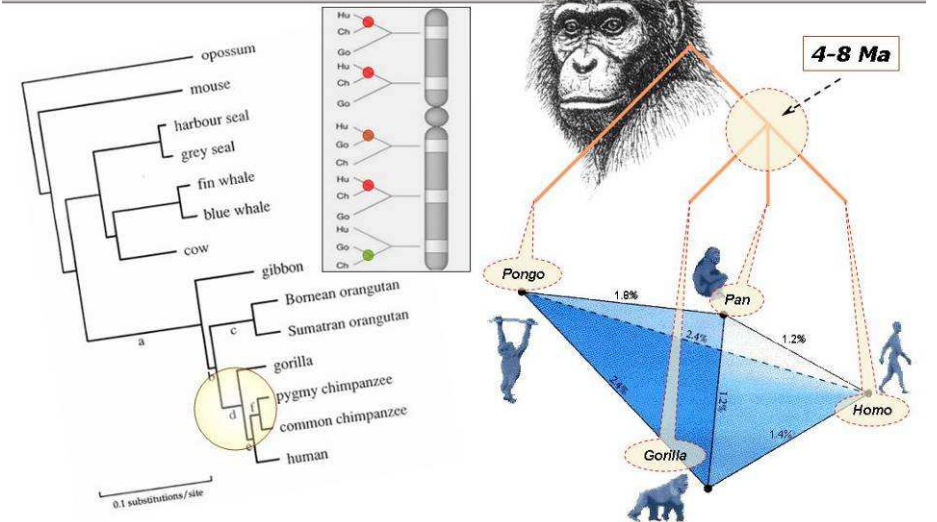
Antropomorfe, filogenesi e tassonomia (oggi)



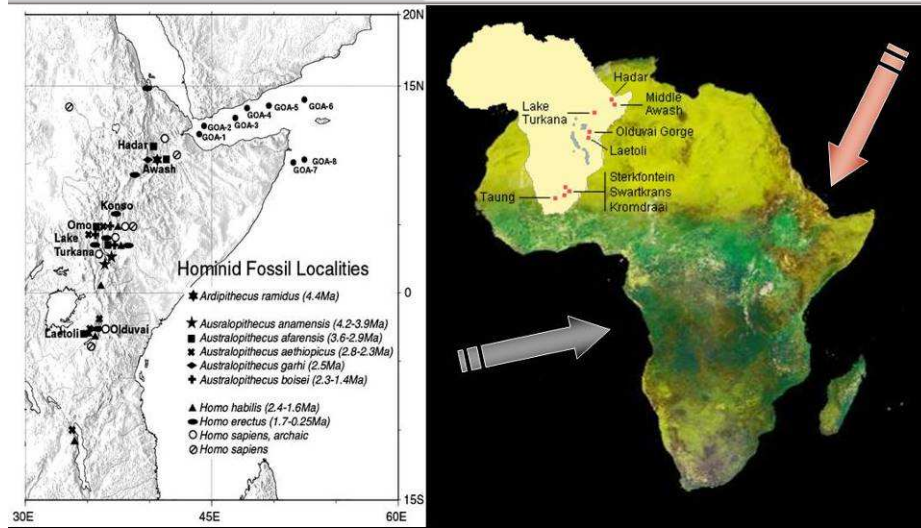
Antropomorfe, filogenesi e tassonomia (ieri)



Distanze genetiche



Africa orientale



Picchi di aridità

